



South Glengarry

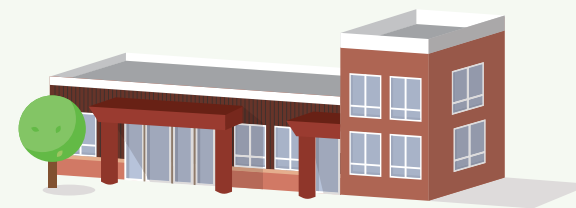
South Glengarry is the birthplace of Ontario. Located close to the St. Lawrence River, South Glengarry is 15 minutes east of Cornwall and 45 minutes west of Montreal. South Glengarry has a strong marine culture with many people in the community very interested in fishing and boating. The famous Cooper's

Marsh Conversation Area is a great place for students to enjoy the beauty of Eastern Ontario's nature and wildlife. Students looking for a great place to eat and shop can enjoy walking through the historic downtown cores of the towns of Lancaster and Williamstown.



Eight Great Things in South Glengarry

- | | | | |
|-------------------------------------|-----------------------------------|---------------------------|---|
| 1. Cooper's March Conservation Area | 3. Williamstown Recreation Centre | 5. Williamstown Fair | 7. Peanut Line Trail |
| 2. Raisin River Canoe Races | 4. Bainsville Outdoor Ice Rink | 6. Lancaster Curling Club | 8. Hybrid Marine Paddleboard & Canoe rental |



Char-Lan Intermediate & District High School

At Char-Lan Intermediate & District High School, our focus is to provide all students with the opportunity to develop knowledge, skills, and attitudes that will help them to understand and appreciate themselves, relate effectively with others, develop appropriate educational plans, and explore career options.

Mascot: **Crusaders** School Population: **300**
 Colours: **Yellow and Blue** International Students: **1-5**

Top Sports and Clubs:

- French
- Soccer
- Horseback Riding
- Track & Field



Paul Leitner
From Austria

"This experience is definitely worth it. I learned a lot about a new country while also being able to share a lot about my own."



19743 County Road 17
Williamstown, Ontario K0C 2J0
(613) 347-3357

char-lan.uccsb.on.ca

Specialist High Skills Majors:
Health & Wellness, Agriculture

